

A1700 Alpha⁰

Direct Connected Metering



The Power to Change...

Features

- Cost effective direct connected meter
- Comprehensive tariff structure
- 2 line dot matrix multi-lingual display
- Instantaneous instrumentation values
- Plug-in modules for extended functionality
- Communications via optical port or communications module
- 40 days of load profile data
- Internal clock and calendar with battery back-up
- Concealed utility/reset pushbutton
- 2 or 3 element availability
- Accuracy Class 1 or 2
- Upgradable to Code of Practice 5
- High security design

Options

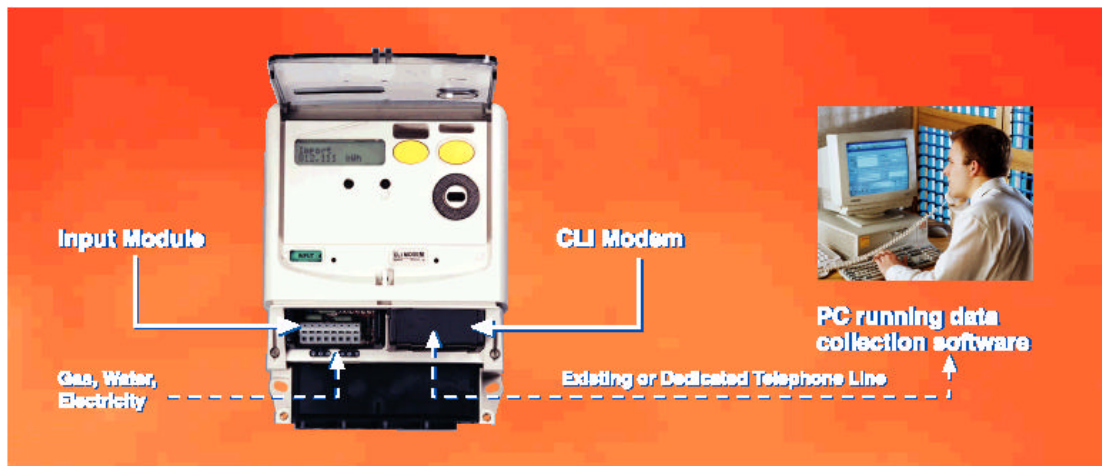
- 4 relay outputs
- Range of interchangeable input/output and communications modules
- 450 days of load profile data

The A1700 meter offers a cost effective solution for direct connected metering applications. It provides a range of tariff functions suitable for all industrial and commercial applications.

The meter features include a fully programmable customer defined display and load profile data storage for 40 or 450 days. Local communications is via a standard IEC optical port. The meter can operate as a stand alone unit or as part of a comprehensive metering system.

The functionality of the meter can be increased by installing additional modules. Communications modules can be RS232 or RS485. A range of PSTN, or a GSM modem plug into the module directly under the meter terminal cover. An input module provides the ideal solution for multi-utility metering. Alternatively an output module increases the number of relays from four to eight. Windows™ 'Power Master Unit' software programs or reads the meter data.

The direct connected meter can be supplied to meet accuracy Class 1 or 2 and is fully compliant to EMC regulations EN 50081-1 and EN 50082-1.



Measured Quantities

kWh total import/export
 kvarh lagging import/export
 kvarh leading import/export
 kVAh
 3 customer defined registers -
 derived from measured quantities
 4 inputs from external meters (if fitted)

Tariff Structure

32 Time of use registers
 8 Maximum demand registers
 12 Seasons
 24 Season changeover dates
 96 Switching times
 64 Exclusion dates
 Programmable deferred tariff

Data Storage

40 days of half hour data for one channel
 Option of increased storage to 450 days
 Load profile storage for any measured quantity
 Programmable integration period.
 12 sets of historical data

Display

2 line 16 character dot matrix liquid crystal display
 Wide viewing angle
 Fully customer defined, multilingual

Communications

Local: IEC 62056-21 (formally IEC 61107)
 Remote: Interchangeable modules (RS232, RS485 or customer specific)

Measurement

Accuracy class: Class 1 or 2

Ratings

Voltage range: 57.5 - 240V (3ph 4wire)
 100 - 415V (3ph 3wire)
 Standard Voltages: 120, 230, 277, 400V
 Max. current (Imax): 100A
 Standard current (Ib): 10, 15, 20, 30, 40A

Other voltage and current values are available.
 Contact Elster Metering Systems.

Frequency: 50Hz or 60Hz
 Temperature:
 Operating: -20°C to +55°C
 Storage: -25°C to +70°C

Case & Dimensions

Sealed flip-up lid:

- Conceals utility/reset pushbutton
- Provides for customers own information to be securely added to the nameplate
- Allows visual identification of modules fitted

279mm(high) x 170mm(wide) x 81mm(deep)
 Weight: 1.5kg

Approvals

IEC 61036 and IEC 61268
 Compliant to EMC Regulations
 EN 50081-1, EN 50082-1



Elster Metering Systems
 Oulton Road
 Stone, Staffordshire
 ST15 0RS
 Tel: +44 (0) 1785 812111
 Fax: +44 (0) 1785 818804
 www.elstermetering.com

The company's policy is one of continuous product improvement and the right is reserved to modify the specification contained herein without notice.